



Industrial/Commercial Kellogg Wholesale and Building Supply Co., Inc.

THE COMPANY

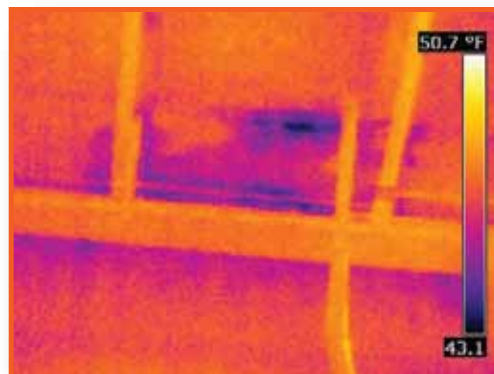
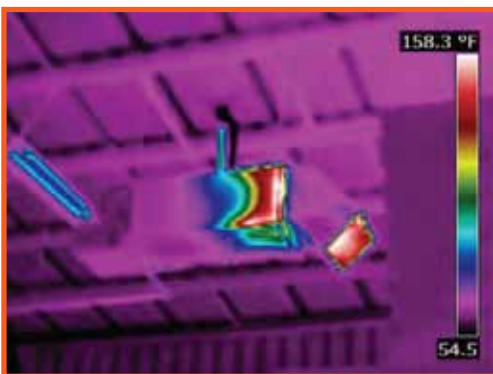
BlueThermal is a division of Machin Engineering, LLC – a licensed civil engineering firm. BlueThermal uses thermographic imaging to “see” moisture intrusion(s), determine energy efficiency, electrical malfunctions, and mechanical malfunctions.

THE INSPECTION

BlueThermal completed an infrared scan inspection of the interior of the building and the electrical panels. The scan included such areas as the walls and ceilings of the three warehouses, front office ceiling and walls, entry and overhead doors, power and lighting electrical panels, and gas warehouse furnaces.

The inspection was completed in less than 3 hours and in that time we discovered conditions that were less than favorable and required repair and maintenance. Those areas were:

- Existing roof patches that are possibly leaking
- Location of a previously unknown roof leak
- Lighting circuit breaker that was overloaded



THE RESULTS

A detailed report was submitted and our results showed Kellogg Wholesale that a majority of their systems operate reasonably under normal conditions. A few areas were shown to require attention in order to bring all areas of the complex into satisfactory compliance. This process enabled the parties involved to provide a process for discovery on an economically efficient basis.